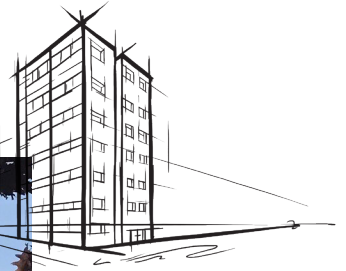


# Frontrock®

## Exterior Insulation and Finish Systems (EIFS)



ROCKWOOL Frontrock® products are semi-rigid stone wool insulation boards that are noncombustible and fire resistant, and will not develop toxic smoke or promote flame spread, even when directly exposed to fire.

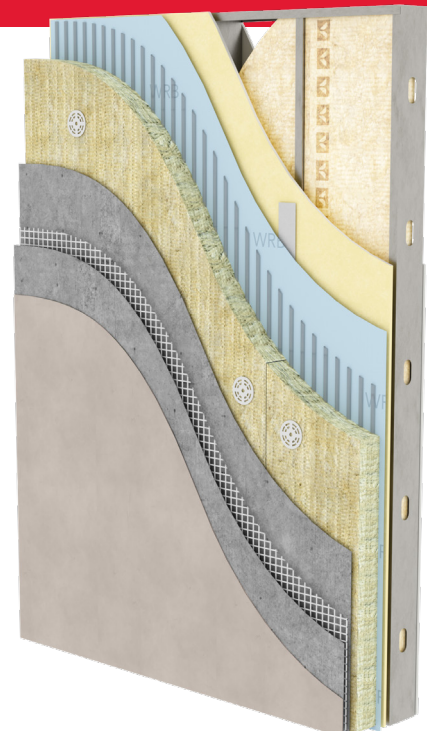
The mono-density version provides consistent density and high compressive strength throughout the board. The dual-density offering, available in thicknesses  $\geq 2.5"$ , features a high-density top layer that helps minimize base coat consumption during installation and a lower-density inner layer that reduces board weight and allows it to better adapt to wall irregularities.

Mechanically-fastened as part of your long-term cladding system, Frontrock contributes toward improved energy efficiency, thermal comfort, moisture control, and acoustic performance, leaving you with increased design freedom in new construction and retrofit projects.

Learn more at [rockwool.com/frontrock](https://rockwool.com/frontrock)

### Fire Performance

Using Frontrock as a continuous insulation helps you to meet non-combustibility requirements for EIFS applications.



# Frontrock®

## Exterior Insulation and Finish Systems (EIFS)

### Technical Data Sheet

Exterior Insulation and Finish Systems 07 24 00\*

Board Insulation 07 21 00\*\*

**ROCKWOOL Frontrock products are semi-rigid and noncombustible stone wool insulation boards engineered to be used in mechanically-fastened exterior insulation and finish system (EIFS) designs.**

	Performance <sup>1</sup>		Test Standard							
Compliance	Mineral Fiber Block and Board Thermal Insulation - Type IVA Compliant Mineral Fibre Thermal Insulation for Buildings - Type 1 Compliant							ASTM C612 CAN/ULC S702		
Reaction to Fire	Flame Spread Index = 0; Smoke Developed Index = 0 (Class A) Flame Spread Rating = 0; Smoke Developed Classification = 0 Combustibility of Materials at 750 °C - Noncombustible Determination of Non-combustibility of Building Materials - Non-combustible							ASTM E84 (UL 723) <sup>3</sup> CAN/ULC S102 ASTM E136 CAN/ULC S114		
Density	<b>Monolithic Density:</b> 8.5 lbs/ft <sup>3</sup> (136 kg/m <sup>3</sup> ) <b>Dual Density</b> (thickness ≥ 2.5"): 9.3 lbs/ft <sup>3</sup> (150 kg/m <sup>3</sup> ) outer layer and 5.9 lbs/ft <sup>3</sup> (95 kg/m <sup>3</sup> ) inner layer							ASTM C303		
Dimensional Stability	<b>Monolithic Density:</b> Linear Shrinkage - 0.51 % @ 1200 °F (649 °C) <b>Dual Density:</b> Linear Shrinkage - 0.43 % @ 1200 °F (649 °C)							ASTM C356		
Corrosion Resistance	Corrosiveness to Steel - Passed Corrosiveness to Aluminum - Passed Corrosiveness to Copper - Passed							ASTM C665		
Thermal Resistance	R-Value / inch @ 75 °F RSI value / 25.4 mm @ 24 °C		4.0 hr.ft².F/Btu 0.70 m²K/W					ASTM C518 (C177)		
Reaction to Moisture	Water Vapor Sorption - 0.04 % by volume Determination of Fungi Resistance - Passed <b>Monolithic Density (1.5 in.):</b> Water Vapor Transmission, Desiccant Method - 47 perm (2710 ng/Pa-s-m²) <b>Dual Density (3 in.):</b> Water Vapor Transmission, Desiccant Method - 38 perm (2187 ng/Pa-s-m²)							ASTM C1104 ASTM E96  ASTM C1338		
Compressive Resistance	<b>Monolithic Density:</b> 940 psf (45 kPa) @ 10 % compression <b>Dual Density:</b> 522 psf (25 kPa) @ 10 % compression							ASTM C165		
Board Weight by Thickness <sup>2</sup>  Board Dimensions: 24"x48" (610 mm x 1219 mm)	<b>Monolithic Density:</b>									
	Thickness	1.5" (38.1 mm)	2" (50.8 mm)	2.5" (63.5 mm)	3" (76.2 mm)	4" (101.6 mm)				
	Board Weight	8.5 lbs. (3.9 kg)	11.3 lbs. (5.1 kg)	14.2 lbs. (6.4 kg)	17.0 lbs. (7.7 kg)	22.7 lbs. (10.3 kg)				
	<b>Dual Density:</b>									
	Thickness	2.5" (63.5 mm)	3" (76.2 mm)	3.5" (88.9 mm)	4" (101.6 mm)					
Acoustical Performance	Board Weight	11.3 lbs. (5.1 kg)	13.2 lbs. (6.0 kg)	15.2 lbs. (6.9 kg)	17.2 lbs. (7.8 kg)					
	Thickness (in.)	125 Hz	250 Hz	500 Hz	1000 Hz	2000 Hz	4000 Hz	NRC	SAA	ASTM C423
	Monolithic Density	1.5	0.17	0.51	0.97	1.01	0.95	0.95	0.85	
Dual Density	3	0.5	0.75	0.95	0.97	0.99	0.99	0.90	0.90	

Storage conditions  
(Inside/Outside/Stacking)

Do not store outside.

**Declare.**



Issued 12-2024  
Supersedes 04-23

For more information regarding the certifications and listings of our stone wool insulation products, please visit: [rockwool.com/certifications-and-listings](https://rockwool.com/certifications-and-listings)

<sup>1</sup>Monolithic density testing based on 1.5" thickness. Dual density testing based on 3" thickness.

<sup>2</sup>Note that weights may vary +/- 10% from the posted values.

<sup>3</sup>Meets Class A requirements for flame spread and smoke developed indices per IBC

NOTE: \*Master Format 1995 Edition \*\*Master Format 2004 Edition. As ROCKWOOL has no control over installation design and workmanship, accessory materials or application conditions, ROCKWOOL does not warranty the performance or results of any installation containing ROCKWOOL's products. ROCKWOOL's overall liability and the remedies available are limited by the general terms and conditions of sale. This warranty is in lieu of all other warranties and conditions expressed or implied, including the warranties of merchantability and fitness for a particular purpose.



8024 Esquesing Line, Milton, ON L9T 6W3  
Tel: 800-265-6878 • Fax: 800-991-0110  
[rockwool.com](https://rockwool.com)