



Project Success [Sto]ries

**sto**panel



# StoPanel® Technology: Revolutionizing Building Construction and Renovation

A changing design and construction landscape continues to reshape how our built environment is created and maintained.

Contractors face aggressive project timelines and limited budgets. Limited job site footprints. Shifting building code requirements. A shortage of skilled workers.

Building owners confront challenges of their own. Aging structures that desperately need makeovers. Increased energy efficiency requirements. Leaking façades. Not to mention buildings with tenants and occupants whose lives or businesses can't be disrupted.

As an architect, your biggest challenge is helping owners and contractors overcome these obstacles while integrating form and function in your design.

StoPanel® Technology helps you simplify the construction and renovation process with

complete exterior wall system panels custom designed to match every project need. Individually manufactured at one of 27 StoPanel affiliates throughout North and South America, StoPanel solutions help you solve the unique challenges of every project job site.

StoPanel Technology cuts weeks (or months) out of the typical construction schedule. It reduces costs. And it eliminates the need for multiple trades to be on-site since the wall sections arrive complete and can usually be installed by a handful of workers. Plus, it's perfect for densely populated sites, where there's little room for scaffolding to stage materials or it is prohibitive to use large work crews.

Here are just a few stories from around the country that illustrate how StoPanel Technology is revolutionizing the construction and renovation industry.



# Saving Time and Money Restoring an Atlanta-area Landmark

Built in 1963, 309 East Paces is located in the trendy Buckhead area of Atlanta and was once the headquarters of the nationwide rental company Aaron's. The owners of the 12-story building, Knox/Redan, wanted to preserve the building's aesthetics, selecting a brick design with large industrial-style windows. The general contractor, Balfour Beatty Construction, proposed the use of StoPanel® Technology to meet the developer's limited time and budget.

The team selected StoPanel Classic NEXt® ci as the cladding, with StoCreativ® Brick and StoCreativ® Granite to achieve the look of natural substances without the cost, weight and labor. The panels were produced at the Atlanta manufacturing facility of StoPanel affiliate Southern Wall Systems.

Use of StoPanel Technology saved the owners \$500,000, enhanced the energy efficiency of the building and proved to be a faster and safer method of construction on the busy Atlanta streets. The panels were installed in 22 working days, cutting valuable time off the schedule, eliminating weather delays, minimizing work done at height and reducing neighborhood disruption.

---

**Architect:**

Lyman Davidson Dooley, Inc.

**Building Owner:**

Knox/Redan, a joint venture of Knox Property Group and Redan Group Investments

**Location:**

309 East Paces Ferry Road  
Atlanta, GA

**StoPanel Products:**

StoPanel Classic NEXt® ci with StoCreativ® Brick and StoCreativ® Granite

**StoPanel Affiliate:**

Southern Wall Systems, Suwanee, GA

**General Contractor:**

Balfour Beatty

# Aloft and Element Hotels Share a Building and Panelization Benefits

Two hotel brands – Aloft and Element – share a single 33-story tower in the popular 6th Street entertainment district of Austin, TX. The two hotels weren't planning to use panelization technology, but they were seeking a unique look. Time was short; winter was coming. And they realized the site offered little space for a work area.

**Architect:**

HKS Architects

**Building Owner:**

White Lodging

**Location:**

Austin, TX

**StoPanel Products:**

StoPanel® Classic ci,  
StoPanel Backup with Dri-Design®  
metal wall panel system

**StoPanel Affiliate:**

Baker Triangle Prefab

**General Contractor:**

DPR Construction

**Building Envelope Consultant:**

Curtainwall Design Consulting

When they considered the aggressive time frame, StoPanel® Technology's affiliate in Dallas proposed the use of StoPanel Technology. It was, they said, the only way to get the job done. For a third of the building, they chose StoPanel® Classic ci, a prefabricated insulated wall panel system that weighed 90 percent less than a precast panel of the same size. The rest of the building was completed with Dri-Design® metal wall panel system over StoPanel Backup.

The 500 wall panels were assembled at Baker Triangle Prefab in Dallas, then transported to Austin by truck and hoisted directly onto the structure. The installation required only six workers who completed a floor every two days and eliminated most of the need for scaffolding and mast climbers.





# Rowan University Accelerates Project Timeline to Meet Student Needs

Rowan University in Glassboro, NJ, was growing rapidly, blossoming in just a few years from a state teachers' college to a full university with a graduate program and 18,000 students. The university, located in the suburbs of Philadelphia, needed student housing quickly.

In a four-year span, the university worked with the city and a private developer, Nexus Properties, to build seven buildings, some as large as 500,000 square feet. To meet the university's aggressive time frames and create the highly detailed exterior look officials wanted, Nexus recommended the use of StoPanel prefabricated panels in brick, cast stone and texture. The fact that work could continue over the winter months was another important factor in the decision.

StoPanel affiliate Jersey Panel assembled the panels in its prefabrication facility, and a crew of about six installed them at the site, averaging ten panels a day.

---

**Architect:**

Blackney Hayes

**Owner/Developer/General****Contractor:**

Nexus Properties

**Location:**

Rowan University  
Glassboro, New Jersey

**StoPanel Products:**

StoPanel® Brick ci, StoPanel® Classic ci  
with Stolit Lotusan®, StoPanel Backup

**StoPanel Affiliate:**

Jersey Panel

# Le Meridien and AC Hotels Find an Easier Way to Build

The first collaboration from the Marriott and Starwood merger, the dual-branded Le Meridien and AC Hotels bring a European flavor to Denver. Located in the heart of the city's downtown, the site offered limited access and no opportunity to close streets to traffic. A panelized approach using StoPanel® Technology was the only way to go.

StoPanel affiliate South Valley Prefab manufactured the panels at its climate-controlled facility in nearby Littleton, CO. The panels were transported to the site and installed with a tower crane.

---

**Architect:**

HKS Architects

**Building Owner:**

White Lodging

**Location:**

Downtown Denver, CO

**StoPanel Products:**

StoPanel® Classic ci

**StoPanel Affiliate:**

South Valley Prefab

**General Contractor:**

JV Swinerton / Hunt

The plan called for concrete floor slabs to be poured for the 20-story structure at a rate of one floor per week. South Valley Prefab matched that pace, installing the StoPannels three stories below the floor the concrete crew was pouring. Working with a team of five or six, South Valley worked three days a week to install all the panels on a floor, completing the entire project in about 40 days, or 300 hours.

The use of panels shortened construction time by about 75 percent, according to South Valley's CEO, Travis Vap.





# Inspira Medical Center Adds Two Floors in “Unbelievable” Time Frame

When Inspira Medical Center of Vineland, NJ, wanted to add two floors to its acute care building, they set some ambitious goals. Specifically, they needed to match the design theme of the existing single-story structure. And they were looking for a quick solution, even though it was the beginning of winter.

General contractor Hunter Roberts Construction Group brought in StoPanel Technology affiliate Jersey Panel for design-assist support and ultimately chose StoPanel Classic NEX<sup>T</sup>® ci as the cladding. The decision proved especially advantageous since the winter turned out to be very harsh. And the spring weather was even worse.

Rather than taking a conventional construction time frame of four or five months, Jersey Panel built 30,000 square feet of exterior wall panels at its nearby manufacturing facility and shipped them to the site. Installation took less than two weeks. “The cost savings was off the chart,” according to Jersey Panel CEO Dominick Baruffi.

And Inspira Medical Center had its 72 new patient rooms operating much sooner than expected.

---

**Architect:**

Array Architects

**Building Owner:**

Inspira Medical Center

**Location:**

Vineland, NJ

**StoPanel Products:**

StoPanel Classic NEX<sup>T</sup>® ci

**StoPanel Affiliate:**

Jersey Panel

**General Contractor:**

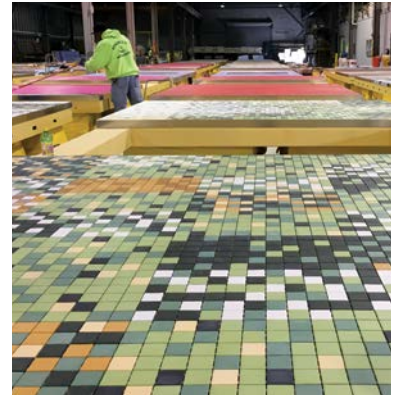
Hunter Roberts Construction Group



# StoPanel® Technology: A Better Way to Build

Whether it's a hotel in Denver or student housing in New Jersey, StoPanel® Technology offers advanced building solutions that shorten timelines and cut costs. And, in a few cases, they make projects feasible that might not have been achievable with conventional building methods.

By moving the manufacturing of exterior wall systems off the construction site, StoPanel Systems allow work to be completed under stable, climate-controlled conditions with expert technology and workmanship. And a reduction in the risk associated with on-site construction, especially when working at height.



If your next project has a challenging time frame, a limited budget or a tight footprint, we'll help you rise to the challenge without sacrificing your design vision.

Ready to start your success [sto]ry? Visit [www.StoPanel.com](http://www.StoPanel.com)



**Sto Panel Technology**

3800 Camp Creek Parkway

Building 1400, Suite 120

Atlanta, GA 30331

Phone 888-227-8334

Toll Free 888-227-8334, Ext. 40

Fax 856-690-0100

[www.StoPanel.com](http://www.StoPanel.com)



For more on Sto Panel Technology, visit [www.StoPanel.com](http://www.StoPanel.com)

To reach a StoPanel expert, call us toll-free **888-227-8334, Ext. 40**