



Building with conscience.

StoTherm® ci GPS

Durable, High Performance,
Insulated Wall System

Facades

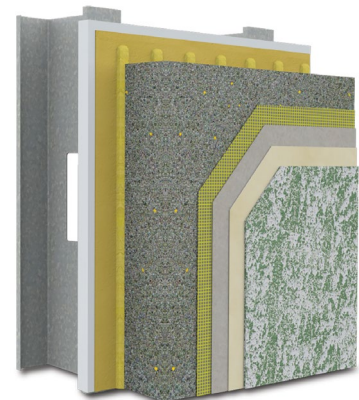


StoTherm® ci GPS is an exterior wall system that is backed with an integrated StoGuard® air and water-resistant barrier and moisture drainage plane. This advanced system utilizes Sto GPS Board, an advanced rigid insulation board that provides a thermal resistance of R4.7 per inch. The result is a durable, thermally efficient, wall system with endless aesthetic possibilities.



StoTherm ci GPS opens the door to a new world of exterior envelope sustainability and design flexibility. Multiple aesthetic options can be seamlessly combined with continuous insulation that meets or exceeds ASHRAE 90.1 prescriptive requirements. A StoGuard® air and water-resistant barrier with a defined moisture drainage plane protects against moisture intrusion and excess energy consumption caused by air leakage.

Beauty, functionality, and sustainability are combined in one wall system, supported by independently verified building code compliance.



StoTherm ci GPS with StoSignature® Rough 20 Color Partial



Beauty Inside and Out

- Natural stone, thin brick, StoCast Wood, StoCast Brick, and a wide range of performative aesthetics can be seamlessly tied together.
- StoTherm ci GPS wall systems are typically less than one inch thicker than the Sto GPS Board insulation that is selected. That means more interior space and interior design flexibility for a given building footprint.

Durability and Code Compliance

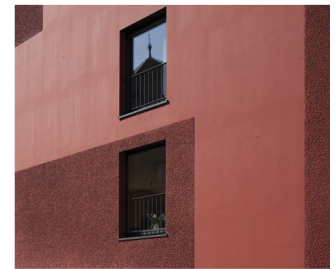
- StoTherm ci GPS includes a StoGuard air and water-resistive barrier, with code compliance for use for use behind Sto systems and other claddings confirmed by ICC-ESR 1233.
- StoTherm ci GPS also provides a continuous drainage plane that effectively manages incidental moisture. Code compliance of the Sto GPS Board is confirmed by UL R27379.
- Ultra-high impact resistance is available by specifying a masonry veneer or Sto's high-strength reinforcing mesh.

Thermal Efficiency

- Sto TurboStick® polyurethane adhesive eliminates mechanical fasteners and associated thermal bridging.
- One continuous layer of up to R56 continuous insulation can be selected.

Sustainability

- StoTherm ci GPS weighs less than 2 lbs/ft² (more if masonry veneer is used). The allowable deflection of L/240 (L/360 with masonry finishes) allows lighter framing – reducing the overall weight and cost of the exterior wall assembly.
- Using less material directly reduces resource consumption, embodied energy and greenhouse gas emissions.
- Sto GPS Board does not contain fluorocarbon blowing agents, has low global warming potential (GWP) and zero ozone depletion potential (ODP). It can be used in all 50-states.



Scan QR code to learn more about Sto GPS,
or visit www.stocorp.com/sto-gps-board

ATTENTION

Sto products are intended for use by qualified professional contractors, not consumers, as a component of a larger construction assembly as specified by a qualified design professional, general contractor or builder. They should be installed in accordance with those specifications and Sto's instructions. Sto Corp. disclaims all, and assumes no, liability for on-site inspections, for its products applied improperly, or by unqualified persons or entities, or as part of an improperly designed or constructed building, for the nonperformance of adjacent building components or assemblies, or for other construction activities beyond Sto's control. Improper use of Sto products or use as part of an improperly designed or constructed larger assembly or building may result in serious damage to this product, and to the structure of the building or its components. **STO CORP. DISCLAIMS ALL WARRANTIES EXPRESSED OR IMPLIED EXCEPT FOR EXPLICIT LIMITED WRITTEN WARRANTIES ISSUED TO AND ACCEPTED BY BUILDING OWNERS IN ACCORDANCE WITH STO'S WARRANTY PROGRAMS WHICH ARE SUBJECT TO CHANGE FROM TIME TO TIME.** For the fullest, most current information on proper application, clean-up, mixing and other specifications and warranties, cautions and disclaimers, please refer to the Sto Corp. website, www.stocorp.com.

Sto Americas

Sto Corp.
3800 Camp Creek Pkwy
Building 1400, Suite 120
Atlanta, GA 30331
USA

Phone 1-800-221-2397
www.stocorp.com