



Building with conscience.

Sto Fireblocking Solution

Facades

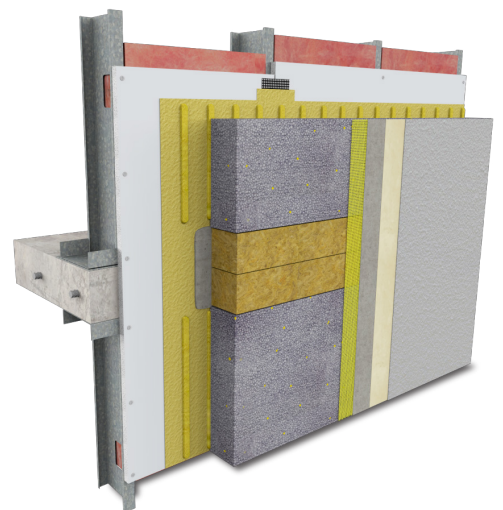


Sto's patent-pending solution meets the 2022 New York City Building Code fireblocking requirements for combustible exterior wall assemblies.



The City of New York has introduced rigorous fireblocking requirements in its 2022 NYC Building Code (BC) and other local municipalities could follow suit. This new code is comprehensive and requires non-combustible fireblocking to be installed even when wall assemblies comply with NFPA 285. EIFS with foam plastic insulation, MCM, HPL, FRP, and any other wall covering containing combustible components, are all impacted.

Sto Corp. proudly introduces a patent-pending fireblocking solution that comprises the use of Sto Lamellas in StoTherm® ci GPS/EPS, StoPowerwall® ci and StoVentec® Rainscreen® system. This solution is fully compliant, non-combustible and tested in accordance with NFPA 285.

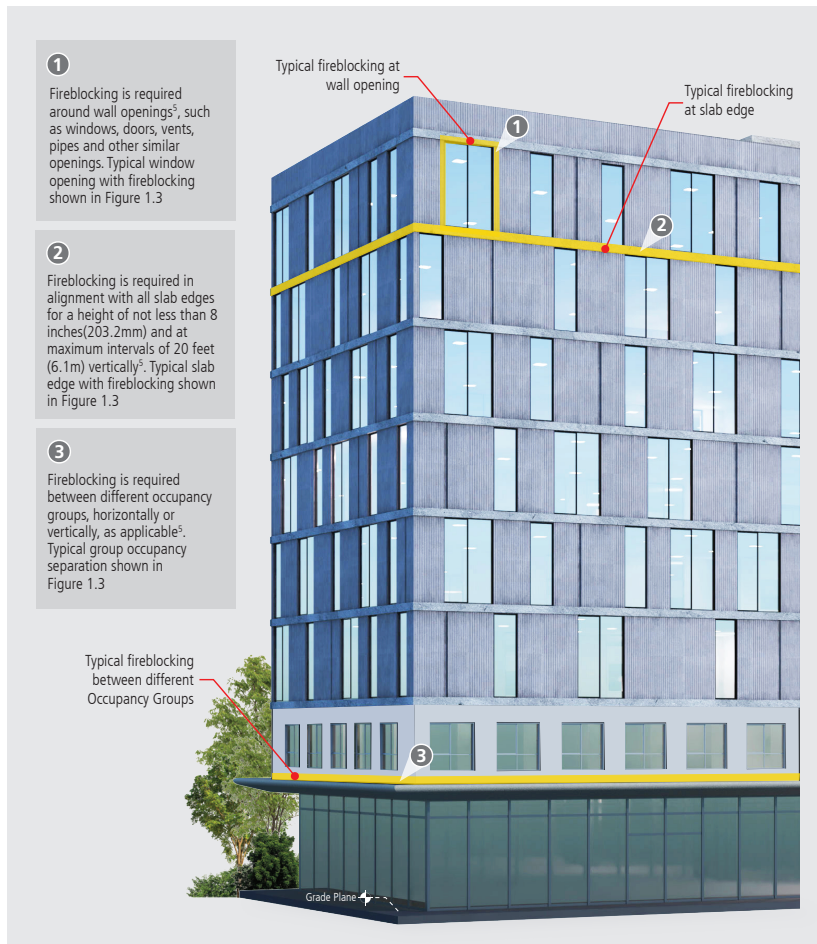


StoTherm® ci GPS with Fireblocking,
StoSignature® Stone 10



A Fully Tested Technology Trusted for Over Twenty Years

Built on technology trusted in Europe for over twenty years, Sto Lamella allows architects to design an energy-efficient building with a cladding that is adhered to the substrate and therefore penetration-free. Plus, with Sto’s innovative solutions, multiple aesthetic can be achieved, and as always with Sto, the systems include a complete air and water-resistant barrier.



1

Fireblocking is required around wall openings¹, such as windows, doors, vents, pipes and other similar openings. Typical window opening with fireblocking shown in Figure 1.3

2

Fireblocking is required in alignment with all slab edges for a height of not less than 8 inches(203.2mm) and at maximum intervals of 20 feet (6.1m) vertically². Typical slab edge with fireblocking shown in Figure 1.3

3

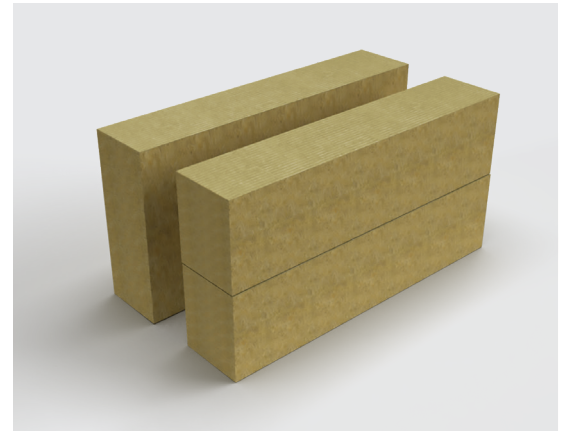
Fireblocking is required between different occupancy groups, horizontally or vertically, as applicable³. Typical group occupancy separation shown in Figure 1.3

Typical fireblocking between different Occupancy Groups

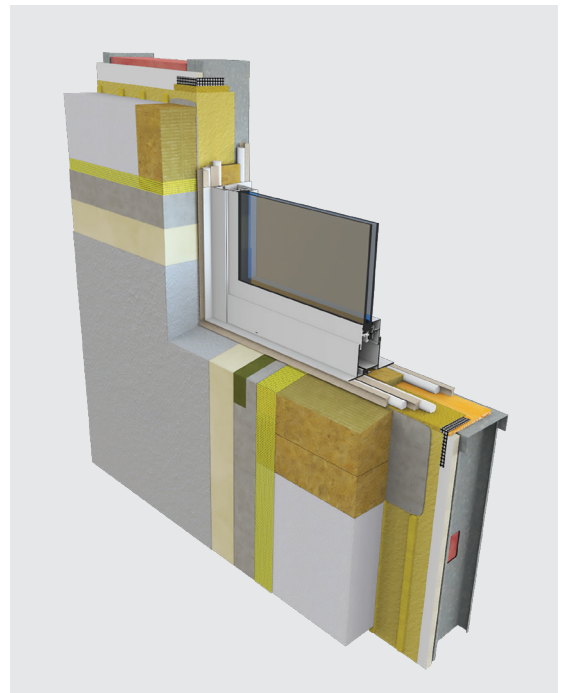
Typical fireblocking at wall opening

Typical fireblocking at slab edge

Grade Plane



Sto Lamella is a non-combustible mineral wool fireblocking product. 48” long and 4” tall; it comes in various thicknesses to accommodate R-value requirements.



Sto Lamella, shown in StoTherm ci with EPS in a typical fire blocking assembly for commercial window sill and jamb.



Scan here or visit www.stocorp.com/sto-fireblocking.com to learn more.

ATTENTION

Sto products are intended for use by qualified professional contractors, not consumers, as a component of a larger construction assembly as specified by a qualified design professional, general contractor or builder. They should be installed in accordance with those specifications and Sto’s instructions. Sto Corp. disclaims all, and assumes no, liability for on-site inspections, for its products applied improperly, or by unqualified persons or entities, or as part of an improperly designed or constructed building, for the nonperformance of adjacent building components or assemblies, or for other construction activities beyond Sto’s control. Improper use of Sto products or use as part of an improperly designed or constructed larger assembly or building may result in serious damage to this product, and to the structure of the building or its components. **STO CORP. DISCLAIMS ALL WARRANTIES EXPRESSED OR IMPLIED EXCEPT FOR EXPLICIT LIMITED WRITTEN WARRANTIES ISSUED TO AND ACCEPTED BY BUILDING OWNERS IN ACCORDANCE WITH STO’S WARRANTY PROGRAMS WHICH ARE SUBJECT TO CHANGE FROM TIME TO TIME.** For the fullest, most current information on proper application, clean-up, mixing and other specifications and warranties, cautions and disclaimers, please refer to the Sto Corp. website, www.stocorp.com.

Sto Americas

Sto Corp.
3800 Camp Creek Pkwy
Building 1400, Suite 120
Atlanta, GA 30331
USA

Phone 1-800-221-2397
www.stocorp.com