



Building with conscience.

| Exterior | Wall Claddings | EIFS |



## **Stolite Panels**

Prefabricated Non-Structural  
Wall Panel Systems for New  
and Retrofit Construction

# Stolite Panels

Non-structural lightweight prefabricated wall panels beat field-applied for quality, appearance and ease of installation on any project.

**Stolite lightweight, energy-efficient prefabricated exterior wall panels feature continuous insulation, optional air barrier and integral decorative and protective finish options. Stolite Panels are non-structural wall panels that can be used on virtually any project where installation speed, minimal business disruption and quality of construction are critical.**

## Most versatile system in the industry

Originally designed for cold-weather climates, Stolite Panels are the most cost-efficient, quickly applied, worker-friendly exterior panels on the market. This flexible system also provides wide-open design and remodeling options for architects while saving on cost and time.

## Installs fast and clean

Whether expanding on new construction or for retrofit applications, Stolite Panels fit the project. Instead of weather-dependent on-site fabrication, Stolite Panels are pre-assembled for greater uniformity and quality control.

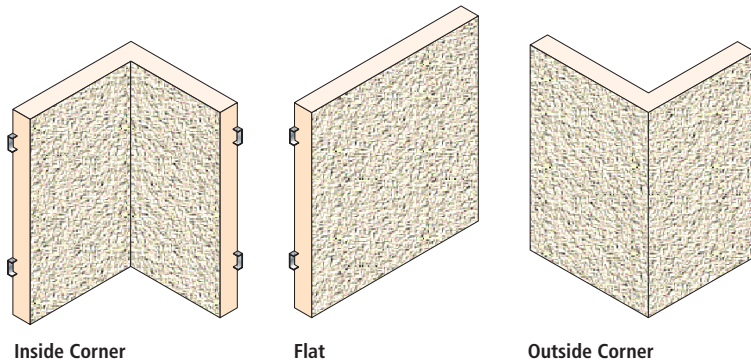
Panel construction can proceed without weather delays, thanks to climate-controlled fabrication inside the shop. Once at the job site, 1.5 lbs.-per-square-foot panels are easily carried to the wall and installed. Minimal scaffolding is required compared to field-applied products, which also require tenting and heating in cold weather.

## Maximum performance, minimal disruption

Continuous insulation in Stolite panels eliminates thermal bridging and the resulting heat loss, creating a more energy-efficient structure. An optional high-performance air barrier minimizes air intrusion through wall construction, delivering significant energy savings in both hot and cold climates and improving indoor air quality. With finished panels delivered to the job site and streamlined construction processes, there is little to no impact on building use and customer access.



Stolite Panel Configurations



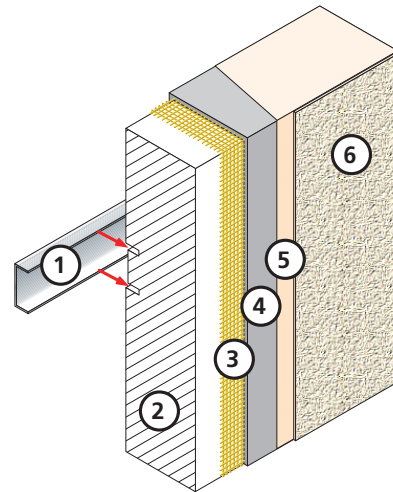
Inside Corner

Flat

Outside Corner

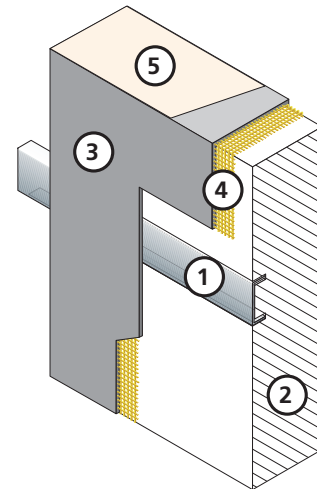
## The "lite" in Stolite

Stolite is not a structural panel but rather a lightweight, insulated, factory-manufactured panel. Because Stolite Panels are lightweight, they are easy and inexpensive to move in the shop and on the job site. Using lightweight Stolite exterior panels also means there's no need to modify existing structures for retrofits and remodels.



### Stolite Panel Front

- 1: Channel
- 2: Insulation
- 3: Sto Mesh
- 4: Sto base coat
- 5: StoPrime™
- 6: Sto Finish



### Stolite Panel Back

- 1: Channel
- 2: Insulation
- 3: Sto base coat
- 4: Sto Mesh
- 5: StoPrime™

## Stolite Panel Features and Benefits

Feature	Benefit
<b>Pre-assembled Panels</b>	<ul style="list-style-type: none"> <li>• Fast and easy on-site installation</li> <li>• Indoor panel fabrication is weather independent</li> <li>• Wind, rain and cold don't slow down progress</li> </ul>
<b>Continuous Insulation</b>	<ul style="list-style-type: none"> <li>• No thermal bridging</li> <li>• Energy efficient</li> </ul>
<b>Lightweight</b>	<ul style="list-style-type: none"> <li>• No need to modify existing structures (retrofit)</li> </ul>
<b>Factory Application</b>	<ul style="list-style-type: none"> <li>• Greater uniformity</li> <li>• Enhanced quality control</li> </ul>
<b>Minimal Business Disruption</b>	<ul style="list-style-type: none"> <li>• Building use and customer access isn't limited during construction</li> </ul>
<b>Less On-site Construction Waste</b>	<ul style="list-style-type: none"> <li>• May contribute to LEED points</li> </ul>
<b>Minimal Scaffolding</b>	<ul style="list-style-type: none"> <li>• Installing completed panels reduces need for scaffolding</li> <li>• 1.5 lbs./square foot panels are easily positioned on walls and installed in minutes</li> </ul>
<b>Low Transportation Cost</b>	<ul style="list-style-type: none"> <li>• Saves money and streamlines construction timeline</li> </ul>
<b>Flexibility of Finishes</b>	<ul style="list-style-type: none"> <li>• Offers architects virtually unlimited options</li> </ul>



Building with conscience.

### Sto Studio

Sto Studio is a unique visual service that facilitates design and color decisions. With Sto Studio's full-color, professional-grade renderings, you can see your building as it would look in different design scenarios. This gives you confidence in your choices, leaving you more satisfied with the outcome. To find out more, call 1-800-221-2397 or email [stostudio@stocorp.com](mailto:stostudio@stocorp.com).



Before



Rendering

### Sto reStore

Sto's reStore program enables you to safeguard your property's value, increase energy efficiency and refresh curb appeal. Sto reStore pulls all the pieces together, offering solutions for maintaining your EIFS and stucco or for complete restoration of your building's facade.

### Sto Corp.

3800 Camp Creek Parkway  
Building 1400, Suite 120  
Atlanta, GA 30331  
Phone 404-346-3666  
Toll Free 1-800-221-2397  
Fax 404-346-3119  
[www.stocorp.com](http://www.stocorp.com)

#### ATTENTION

Sto products are intended for use by qualified professional contractors, not consumers, as a component of a larger construction assembly as specified by a qualified design professional, general contractor or builder. They should be installed in accordance with those specifications and Sto's instructions. Sto Corp. disclaims all, and assumes no, liability for on-site inspections, for its products applied improperly, or by unqualified persons or entities, or as part of an improperly designed or constructed building, for the nonperformance of adjacent building components or assemblies, or for other construction activities beyond Sto's control. Improper use of Sto products or use as part of an improperly designed or constructed larger assembly or building may result in serious damage to this product, and to the structure of the building or its components. **STO CORP. DISCLAIMS ALL WARRANTIES EXPRESSED OR IMPLIED EXCEPT FOR EXPLICIT LIMITED WRITTEN WARRANTIES ISSUED TO AND ACCEPTED BY BUILDING OWNERS IN ACCORDANCE WITH STO'S WARRANTY PROGRAMS WHICH ARE SUBJECT TO CHANGE FROM TIME TO TIME.** For the fullest, most current information on proper application, clean-up, mixing and other specifications and warranties, cautions and disclaimers, please refer to the Sto Corp. website, [www.stocorp.com](http://www.stocorp.com).