

The Rob and Melani Walton Center for Planetary Health at ASU

Tempe, AZ



Facades 

Project Details

Owner

Arizona State University

General Contractor

McCarthy

International Architect

Grimshaw

Local Studio Architect

Architekton

Building Type

Education

Onsite Assembly Date

September 2020

Panel Type

StoPanel® Backup and
StoPanel® Metal ci

Project Overview

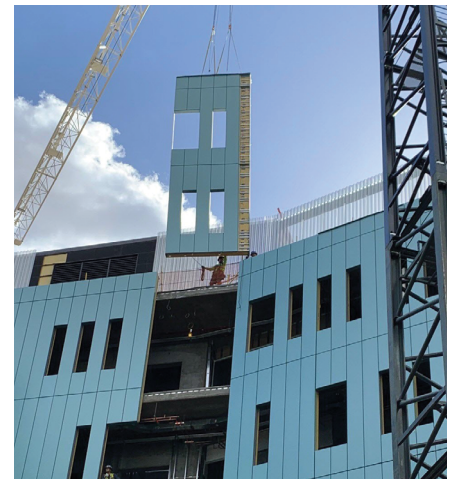
ASU's 7th Interdisciplinary Science and Technology Building stands at the gateway to the university's Tempe Campus, and serves as the school's flagship study for sustainability and planetary health. Sitting between two of Tempe's busiest streets, this 281,000 sqft facility utilized StoPanel® Backup and StoPanel® Metal ci.

Job Requirements

The compact jobsite posed a unique challenge that required the application of Sto Panel Technology's® prefabricated exterior wall panels. These panels were essential to expedite product delivery and navigate the site's bustling surroundings in the heart of the ASU campus, flanked by two busy streets and adjacent to an active light rail line. With only a limited 8 feet of space available from the building's facade, meticulous planning was needed to accommodate panel storage and crane operations. The complex engineering phase spanned five months due to the intricate design. Fabrication of the Sto Backup panels and StoPanel Metal ci began in May 2020 and the installation of the building envelope was completed by February 2021. This effort offered the sole opportunity to integrate the diverse exterior finishes the owner and architect envisioned during the design and construction phases.

Smart Solution

MKB Construction, along with other facade suppliers, worked together to design and prefabricate the exterior facades of the building. The approach utilized StoPanel Backup panels as the main chassis for the exterior wall assembly, providing a quick and efficient method for enclosing the building. The exterior façade's panels were ultimately clad with individual GFRC Rainscreen units, and the courtyard included prefabricated panels with custom designed insulated metal panels applied in the factory.



602-256-6172
www.mkbc.com