



StoVentec® [Sto]ries

sto 
Building with conscience.

Make your building a standout with StoVentec®

StoVentec is a diverse and complete system for ventilated rainscreens encompassing facade cladding, insulation, air and water-resistive barrier and sub-construction.

The wide range of materials include smooth and textured surfaces, masonry veneer, glass, and impressive glass panels up to 6 m² in size. When used in conjunction with the flexible sub-construction, these materials open up countless design possibilities. You can be ambitious not just with surface design, but also with feasibility and implementation. Following are some examples that highlight how all of that comes together in aesthetically stunning, high performance buildings. Look over these success stories. And then contact us to see how StoVentec can make your building a standout.





Art Meets Innovation: The Cafesjian Art Trust's StoVentec Glass Facade

In Shoreview, Minnesota, the Cafesjian Art Trust emerges as a beacon of art and architectural innovation.

Directed by Mohagen Hansen Architectural Group, this retrofit not only pays homage to the original vision of the museum, but also sets a new standard in museum facade design. StoVentec Glass, reflecting Cafesjian's passion for glass art, adorns the exterior in shades of blue, symbolizing both the sky and the museum's modern art collection. This choice underscores the museum's role as a nexus of creativity, where aesthetics and environmental durability coalesce.

StoVentec Glass's thermal efficiency and weather resistance illustrate a marriage of form and function, elevating the building's performance. This facade, vibrant with varied blues, invites

community engagement, heralding a future where architecture amplifies art. The project showcases the transformative impact of material innovation on cultural spaces.

Sto Products:

StoVentec Glass Rainscreen System

Architect:

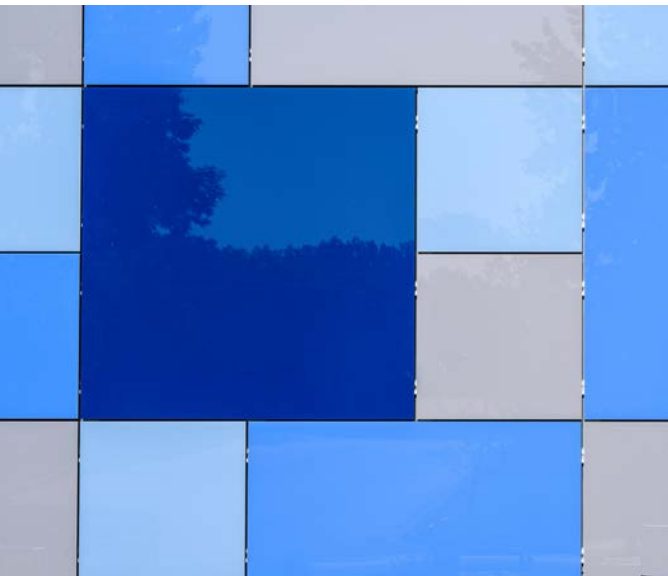
Mohagen Hansen Architecture

Applicator:

United Glass

General Contractor:

Greiner Construction





Davenport House: A Residential Reflection of Innovation

Nestled on the shores of Lake Anna in Louisa County, Virginia, the Davenport House stands as a testament to the fusion of modern design and environmental harmony.

Chosen by Jeff Davenport, a principal of Perkins & Will, for its first residential application in the U.S., StoVentec Glass Rainscreen embodies advanced aesthetics and performance. This unique home, blending seamlessly with its surroundings, utilizes reflective glass to capture the changing lights and seasons, offering a dynamic facade that mirrors the natural beauty of its lakeside setting.

With 1,700 square feet of StoVentec Glass, the Davenport House not only achieves a stunning visual impact but also exemplifies sustainable design through its recyclable materials and energy-efficient envelope.

Sto Products:

StoVentec Glass Rainscreen System

Architect:

Jeff Davenport

Applicator:

Pillar Construction

General Contractor:

Pillar Construction

Innovation Outpost:

Mirroring the Past, Envisioning the Future

At Amarillo College, Texas, the Innovation Outpost stands as a beacon of progress, its renovation symbolizing a bridge between historical significance and future aspirations.

Parkhill, in collaboration with the college, embraced StoVentec Glass Rainscreen for its mirrored facade, reflecting the building's storied past while projecting a vision of innovation. This architectural marvel, devoid of windows to suit its initial design as a visual effects studio, now thrives as a versatile space, hosting performances and fostering discussions on new ideas. StoVentec Glass not only complements the structure's aesthetic and functional goals but also underscores the outpost's role in catalyzing innovation and collaboration within the community.

Sto Products:

StoVentec Glass Rainscreen System

Architect:

Parkhill

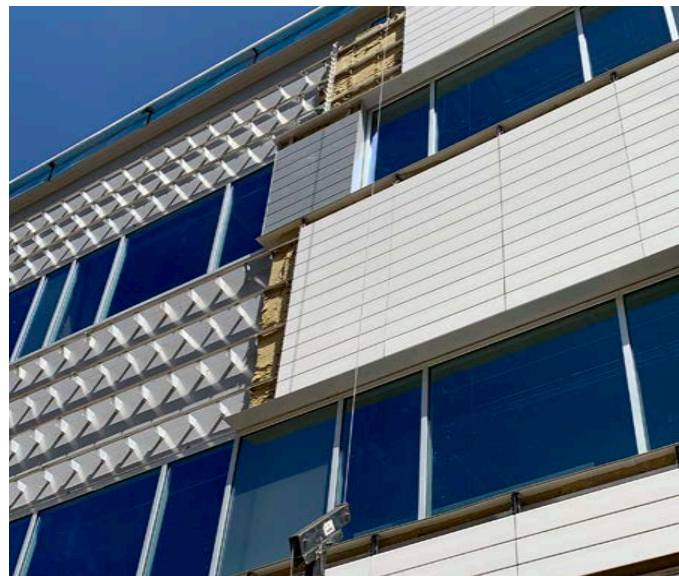
Applicator:

ProWall Inc.

General Contractor:

Amarillo Western Builders





Sheltering Arms Institute: Harmonizing Form and Function

The Sheltering Arms Institute in Richmond, Virginia, marries sophisticated design with critical healthcare functionality.

Facing the challenge of securing two distinct cladding types to its facade, the architects opted for StoVentro Sub-Construction for its unmatched flexibility and support. This system facilitated the seamless integration of terracotta and metal panels, contributing to the building's modern appeal while ensuring rapid installation and precise adjustment to site conditions. As a hub for rehabilitation and recovery, the Institute's exterior, featuring 49,000 square feet of StoVentro, not only reflects its commitment to innovation but also enhances its environment through aesthetic excellence.

Sto Products:

StoVentro™ Sub-Construction

Architect:

HDR

Applicator:

Pillar Construction

Channel Services Partner:

CFS - Cladding Facade Solutions

Zislis Residence: A Coastal Canvas of Color and Light

For Michael Zislis, entrepreneur and visionary behind some of LA's most celebrated hospitality venues, creating a home in Manhattan Beach meant pushing architectural boundaries.

The Zislis Residence, a stone's throw from the Pacific, showcases the StoVentec Rainscreen System in a dazzling display of blues that mirror the ocean's depths. With 900 square feet of StoVentec Glass covering its facade, this home is a testament to the fusion of aesthetic appeal

and architectural innovation, featuring an indoor/outdoor pool, home theater, and a personal brewery. The residence not only stands as a bold statement of design but also as a gathering place where cutting-edge materials and sustainability meet luxury and comfort.

Sto Products:

StoVentec Glass Rainscreen System

Architect:

E.D.E. Associates





Reston Town Center: Sculpting Light and Space

In Reston, Virginia, the Reston Town Center office towers are bridged by an atrium that features a stunning StoVentec Glass ceiling.

Duda Paine Architects harnessed the reflective and flexible qualities of StoVentec Glass to create a geometric prism design that captivates and connects. This architectural feature not only enhances the aesthetic of the space but also supports the center's vision of integrated work environments amidst urban settings. The use of StoVentec Glass ensures durability against high winds while providing a mesmerizing, distortion-free reflection of the sky above with no oil canning.

Sto Products:

StoVentec Glass Rainscreen System
and StoTherm ci

Architect:

Duda Paine Architects

Developer:

Boston Properties, Inc.

Applicator:

United Glass

General Contractor:

Clark Construction

Channel Services Partner:

CFS - Cladding Facade Solutions

Kalamazoo Justice Center: Uniting Community and Justice

The Kalamazoo Justice Center, set in the heart of downtown Kalamazoo, Michigan, embodies the principle of form meets function in its state-of-the-art facility.

TowerPinkster, in collaboration with HOK, selected StoVentec Glass and StoVentec Render to achieve a seamless aesthetic transition from the building's expansive glass facade to the more intimate spaces of the lobby. Nearly 700 square feet of StoVentec Glass seamlessly integrates with 800 square feet of StoVentec Render, adorning the entrance, providing a visually striking yet harmonious interface with the urban landscape. This project not only delivers on the aesthetic

front but also showcases StoVentec's superior weather tightness, thermal performance, and fire protection, aligning with the center's mission to serve the community's needs safely and efficiently.

Sto Products:

StoVentec Glass and Render Rainscreen System

Architect:

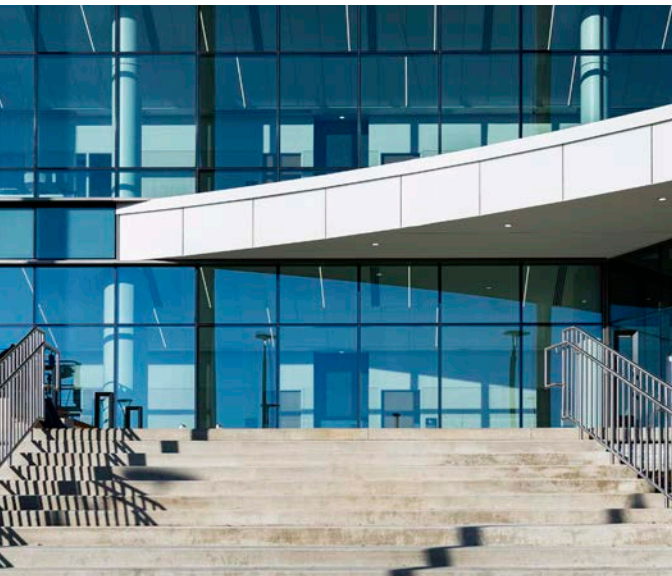
TowerPinkster

Applicator:

Architectural Glass & Metals, Inc.
Sobie Company, Inc.

General Contractor:

CSM Group







Achieve Your Design Vision with Sto

With over 100 years of experience, Sto helps architects bring their visions to life by providing innovative, reliable and high-performance building envelope solutions designed to address the challenges of modern architecture, from tight deadlines to exploring new materials. Sto's building envelope solutions combine all the necessary performance components – air and water-resistant barrier, thermal and sound insulation, and structural reinforcement – with a wide range of aesthetic surfaces. All of our tested, code compliant and warranted systems are backed by the strength of Sto, your proven, trusted partner for innovative building envelope solutions. Explore the range of possibilities that Sto offers to help make your vision a reality.

Explore Our
Design Guides



Sto Corp.

3800 Camp Creek Parkway SW
Building 1400 Suite 120
Atlanta, GA 30331

Phone 404-346-3666
Toll Free 1-800-221-2397
Fax 404-346-3119
www.stocorp.com



Contact your Sto Rainscreen Specialists for more information.
Please visit us at www.stocorp.com
or call us toll free **800-221-2397**.