



Building with conscience.

Queensbridge Quarter

Grand Designs Awards for best housing development of the year

Facades



Queensbridge Quarter combined StoVentec® Glass and Render systems to deliver a stunning apartment building in a rejuvenated London borough. Clever color choices that match the sky provided a visual illusion at the top of the building that helped avoid local height restrictions. Installation was made quick and easy utilizing the innovative StoVentro™ Sub-Construction.

Sto Products	StoVentec® Glass + Render
Client	United House Developments
Applicator	OCL Ltd.
Architect	Levitt Bernstein Associates
Media Contact	Schoeny Jones: sjones@stocorp.com Julie Chalpan: julie@focusunlimitedpr.com



The ventilated Rainscreen® cladding system, StoVentec Glass, creates a stunning effect on the penthouse level of the Queensbridge Quarter apartment building in the London borough of Hackney. Developed by specialist social housing contractor United House, Queensbridge Quarter incorporates a total of 151 affordable residential homes and is part of the Holly Street Estate regeneration scheme.

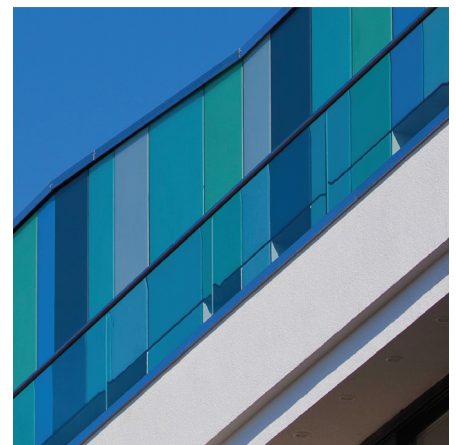
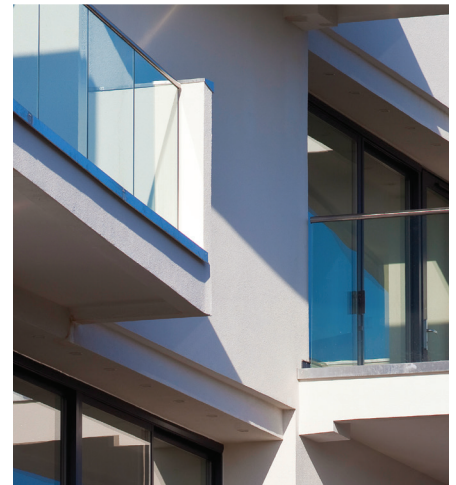
“Sto was able to provide a suitable rainscreen cladding system that worked well with the render system and importantly match the range of colors required by United House.”

Simon Lea | Project Architect | Levitt Bernstein

The scheme uses a select assortment of materials, including the StoVentec Glass system that had previously only been used in mainland Europe. Keen to reduce how high the building looked at street level, due to local authority concerns and to ensure it would sit well with surrounding buildings, Levitt Bernstein decided to set the top floor of the building back away from the street to minimize its visual impression. The blue/green colors of the StoVentec Glass Rainscreen® cladding system correspond with the changing colors of the sky, creating a visual illusion at the top of building.

Simon Lea, project architect at Levitt Bernstein said, “Sto was able to provide a suitable rainscreen cladding system that worked well with the render system and importantly match the range of colors required by United House.” The lightweight StoVentec Glass system with rear fixing and visible joint pattern incorporates suitable insulation materials to meet U-value requirements and the pre-fabricated panels can be quickly and easily installed. The glass panel is manufactured to meet range of colors and size requirements, with RAL color and screen printing options available.

With Phase 2 of Queensbridge Quarter completed in 2009, Levitt Bernstein has won numerous awards for this project including the 2009 Grand Designs Awards “Best housing development of the year”.



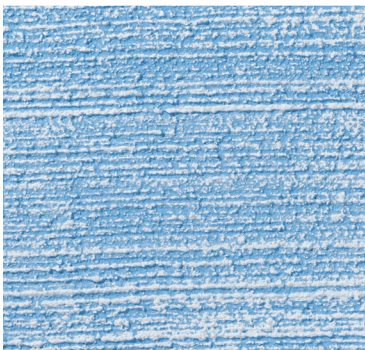
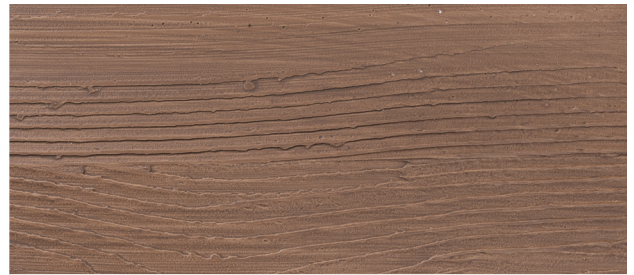


The only limit is your imagination

Inspiration favors the open mind. With Sto, your creative exploration can take you anywhere. Our proven products give you unmatched freedom and the ability to achieve your vision in any color, any form, any texture, any material.

StoVentec rainscreen systems provide a wide range of aesthetic options and price points from glass, to stone, wood, mosaic and any combination in between. They bring form together with function in a complete, single source system, allowing you to create wall systems that are visually stunning, durable and thermally efficient. For example, imaginative design using StoVentec Glass, with the smooth, hard, reflective look of glass, can be accentuated with an adjacent StoVentec Render system. Featuring a wide range of color and texture options, StoVentec Render extends design possibilities, and helps you create a look that is uniquely appealing.

Creativity Begins. **Sto Finishes.**®



Sto Americas

Sto Corp.
3800 Camp Creek Pkwy
Building 1400, Suite 120
Atlanta, GA 30331
USA
Phone 1-800-221-2397
www.stocorp.com