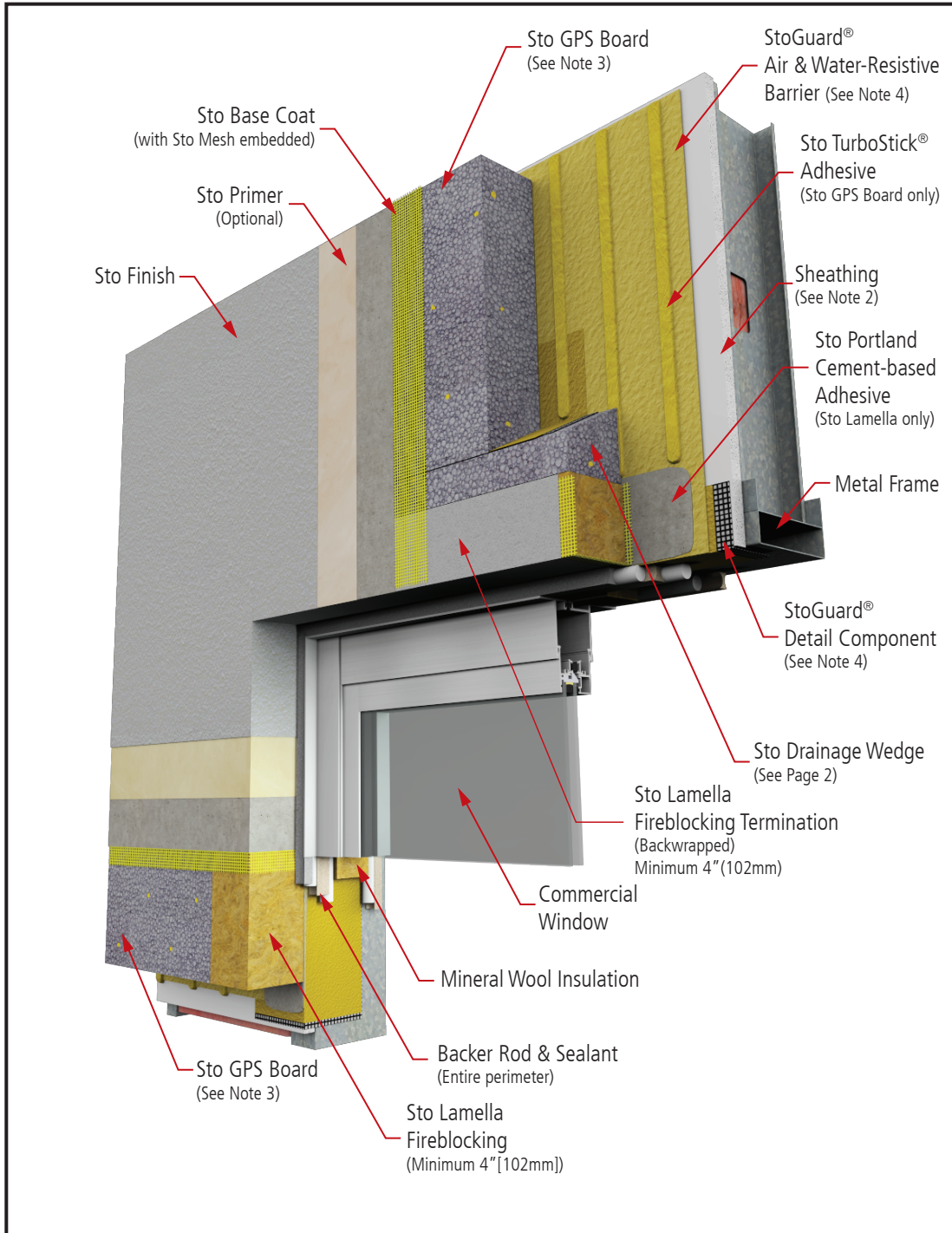


StoTherm®ci GPS with Fireblocking Commercial Window - Head

Detail No.: 58s.05 FB

Date: July 2024

Page 1 of 2



Notes:

1. Refer to New York City Building Code (NYC BC), Section 718.2.6, for complete specific information and design guidance on fireblocking requirements.
2. Glass mat gypsum sheathing in compliance with ASTM C1177.
3. Sto GPS Board (or Sto EPS Insulation Board - see Sto Design Guide and Detail Booklet 52s.xx FB).
4. Refer to StoGuard® Detail Component Applications (Table 1.0) for joint treatment, rough opening protection, backing for masonry anchors, or joint transitions to dissimilar materials and dynamic joints and seams in construction.
5. Components not identified as Sto are furnished by other manufacturers and are not necessarily installed by trades who install the Sto products. Refer to project specific contract documents.

ATTENTION

Property of Sto Corp. All Rights Reserved.

www.stocorp.com

Sto products are intended for use by qualified professional contractors, not consumers, as a component of a larger construction assembly as specified by a qualified design professional, general contractor or builder. They should be installed in accordance with those specifications and Sto's instructions. Sto Corp. disclaims all, and assumes no, liability for on-site inspections, for its products applied improperly, or by unqualified persons or entities, or as part of an improperly designed or constructed building, for the nonperformance of adjacent building components or assemblies, or for other construction activities beyond Sto's control. Improper use of Sto products or use as part of an improperly designed or constructed larger assembly or building may result in serious damage to Sto products, and to the structure of the building or its components.

STO CORP. DISCLAIMS ALL WARRANTIES EXPRESSED OR IMPLIED EXCEPT FOR EXPLICIT LIMITED WRITTEN WARRANTIES ISSUED TO AND ACCEPTED BY BUILDING OWNERS IN ACCORDANCE WITH STO'S WARRANTY PROGRAMS WHICH ARE SUBJECT TO CHANGE FROM TIME TO TIME. For the fullest, most current information on proper application, clean-up, mixing and other specifications and warranties, cautions and disclaimers, please refer to the Sto Corp. website, www.stocorp.com.

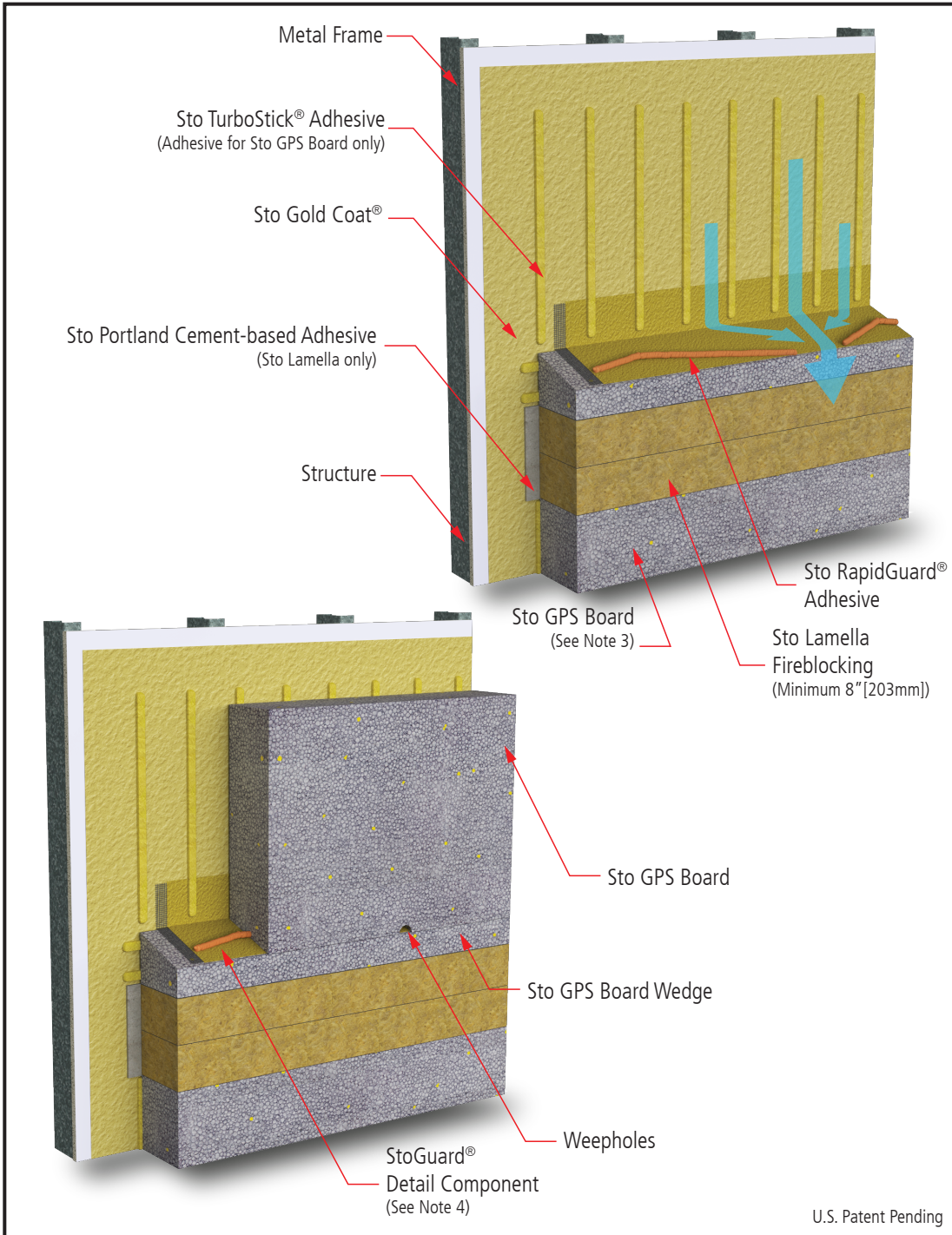


StoTherm®ci GPS with Fireblocking Commercial Window - Head Drange Wedge

Detail No.: 58s.05 FB

Date: July 2024

Page 1 of 2



Notes:

1. Refer to New York City Building Code (NYC BC), Section 718.2.6, for complete specific information and design guidance on fireblocking requirements.
2. Glass mat gypsum sheathing in compliance with ASTM C1177.
3. Sto GPS Board (or Sto EPS Insulation Board - see Sto Design Guide and Detail Booklet 52s.xx FB).
4. Refer to StoGuard® Detail Component Applications (Table 1.0) for joint treatment, rough opening protection, backing for masonry anchors, or joint transitions to dissimilar materials and dynamic joints and seams in construction.
5. Components not identified as Sto are furnished by other manufacturers and are not necessarily installed by trades who install the Sto products. Refer to project specific contract documents.

ATTENTION

Property of Sto Corp. All Rights Reserved.

www.stocorp.com

Sto products are intended for use by qualified professional contractors, not consumers, as a component of a larger construction assembly as specified by a qualified design professional, general contractor or builder. They should be installed in accordance with those specifications and Sto's instructions. Sto Corp. disclaims all, and assumes no, liability for on-site inspections, for its products applied improperly, or by unqualified persons or entities, or as part of an improperly designed or constructed building, for the nonperformance of adjacent building components or assemblies, or for other construction activities beyond Sto's control. Improper use of Sto products or use as part of an improperly designed or constructed larger assembly or building may result in serious damage to Sto products, and to the structure of the building or its components.

STO CORP. DISCLAIMS ALL WARRANTIES EXPRESSED OR IMPLIED EXCEPT FOR EXPLICIT LIMITED WRITTEN WARRANTIES ISSUED TO AND ACCEPTED BY BUILDING OWNERS IN ACCORDANCE WITH STO'S WARRANTY PROGRAMS WHICH ARE SUBJECT TO CHANGE FROM TIME TO TIME. For the fullest, most current information on proper application, clean-up, mixing and other specifications and warranties, cautions and disclaimers, please refer to the Sto Corp. website, www.stocorp.com.



U.S. Patent Pending