

StoVentec® for Masonry Veneer Facades

System edge formations with surrounding aluminum

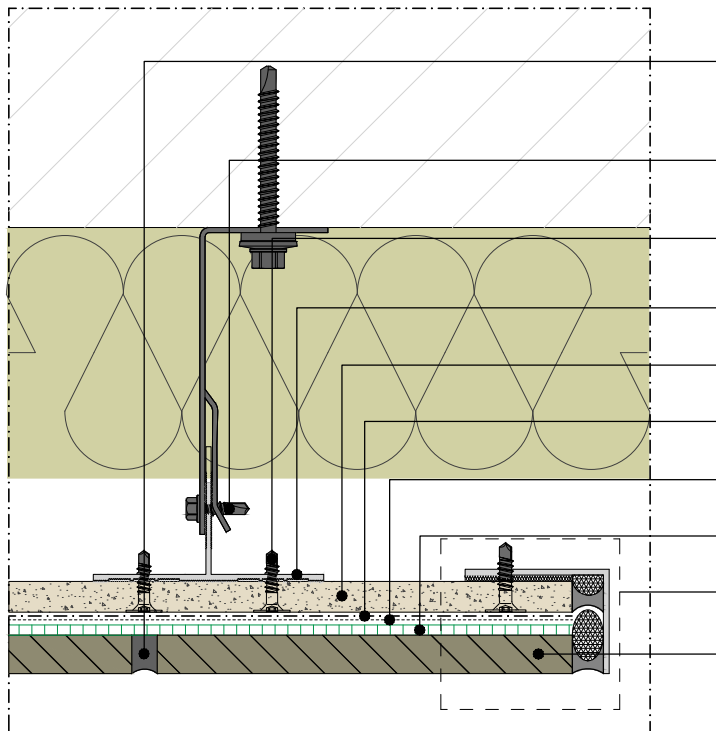
Side edge formation

Date: June 2021

Detail No.: 90.M.042

Plan View

For top edge formation, see detail 90.M.040
 For bottom edge formation, see detail 90.M.041



Grout/Pointing Mortar
 (conforms with ANSI 118.7)

StoVentro Sub-construction Screw with
 self-drilling and over-tightening protection

StoVentro Render Facade Screw

StoVentro T-Profile

StoVentec Carrier Board A+

Sto Base Coat over Sto Primer

Sto Reinforcing Mesh

Sto Adhesive Mortar

See Edge Formation Options

Masonry Veneer

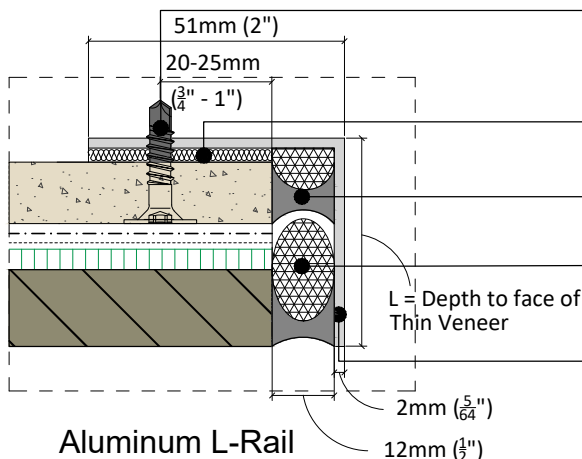
StoVentro Render Facade Screw (5.5 x 24mm)
 Vertical spacing, approx. 300mm (11-3/4"),
 Edge spacing 20-25mm (3/4"-1")

Stick StoGuard Tape flush with the profile edge
 (cut to size)

Sealant over half-round Backer Rod (by others)

Backer Rod and Sealant (by others)

Aluminum L-Rail (by others)



Aluminum L-Rail

Typically used at side edge of expansion joints,

side edge of system, window jambs, and inside corners (by others)

ATTENTION

Sto products are intended for use by qualified professional contractors, not consumers, as a component of a larger construction assembly as specified by a qualified design professional, general contractor or builder. They should be installed in accordance with those specifications and Sto's instructions. Sto Corp. disclaims all, and assumes no, liability for on-site inspections, for its products applied improperly, or by unqualified persons or entities, or as part of an improperly designed or constructed building, for the nonperformance of adjacent building components or assemblies, or for other construction activities beyond Sto's control. Improper use of Sto products or use as part of an improperly designed or constructed larger assembly or building may result in serious damage to Sto products, and to the structure of the building or its components.

STO CORP. DISCLAIMS ALL WARRANTIES EXPRESSED OR IMPLIED EXCEPT FOR EXPLICIT LIMITED WRITTEN WARRANTIES ISSUED TO AND ACCEPTED BY BUILDING OWNERS IN ACCORDANCE WITH STO'S WARRANTY PROGRAMS WHICH ARE SUBJECT TO CHANGE FROM TIME TO TIME. For the fullest, most current information on proper application, clean-up, mixing and other specifications and warranties, cautions and disclaimers, please refer to the Sto Corp. website, www.stocorp.com.