

StoVentec® Render

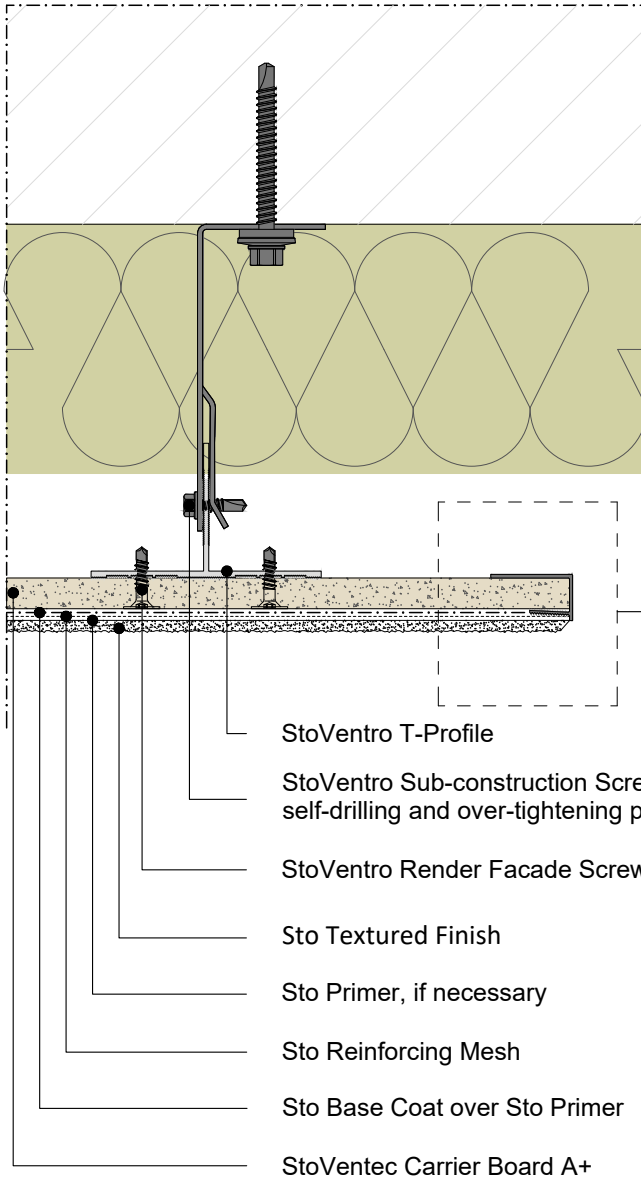
System side edge formations with surrounding Sto Edge Protection Profiles

Date: November 2021

Plan View

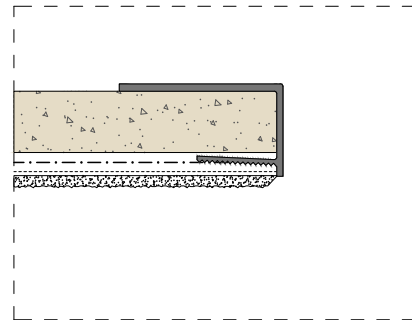
Detail No.: 90.M.037

For top edge formation, see detail 90.R.035
 For bottom edge formation, see detail 90.R.036



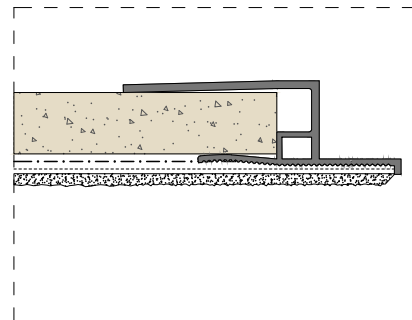
- StoVentro T-Profile
- StoVentro Sub-construction Screw with self-drilling and over-tightening protection
- StoVentro Render Facade Screw
- Sto Textured Finish
- Sto Primer, if necessary
- Sto Reinforcing Mesh
- Sto Base Coat over Sto Primer
- StoVentec Carrier Board A+

See Edge Formation Options



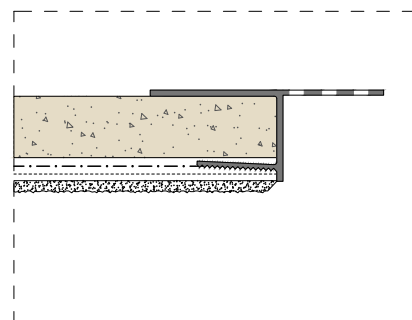
Sto Edge Protection Profile G

Typically used at inside corners, transitions to alternative claddings, and window jambs



Sto Edge Protection Profile GT

Typically used at inside corners, transitions to alternative claddings, and window jambs



Sto Roof Vent Profile

Typically used at inside corners, transitions to alternative claddings, and window jambs

ATTENTION

Sto products are intended for use by qualified professional contractors, not consumers, as a component of a larger construction assembly as specified by a qualified design professional, general contractor or builder. They should be installed in accordance with those specifications and Sto's instructions. Sto Corp. disclaims all, and assumes no, liability for on-site inspections, for its products applied improperly, or by unqualified persons or entities, or as part of an improperly designed or constructed building, for the nonperformance of adjacent building components or assemblies, or for other construction activities beyond Sto's control. Improper use of Sto products or use as part of an improperly designed or constructed larger assembly or building may result in serious damage to Sto products, and to the structure of the building or its components.

STO CORP. DISCLAIMS ALL WARRANTIES EXPRESSED OR IMPLIED EXCEPT FOR EXPLICIT LIMITED WRITTEN WARRANTIES ISSUED TO AND ACCEPTED BY BUILDING OWNERS IN ACCORDANCE WITH STO'S WARRANTY PROGRAMS WHICH ARE SUBJECT TO CHANGE FROM TIME TO TIME. For the fullest, most current information on proper application, clean-up, mixing and other specifications and warranties, cautions and disclaimers, please refer to the Sto Corp. website, www.stocorp.com.