

# StoVentec® Render

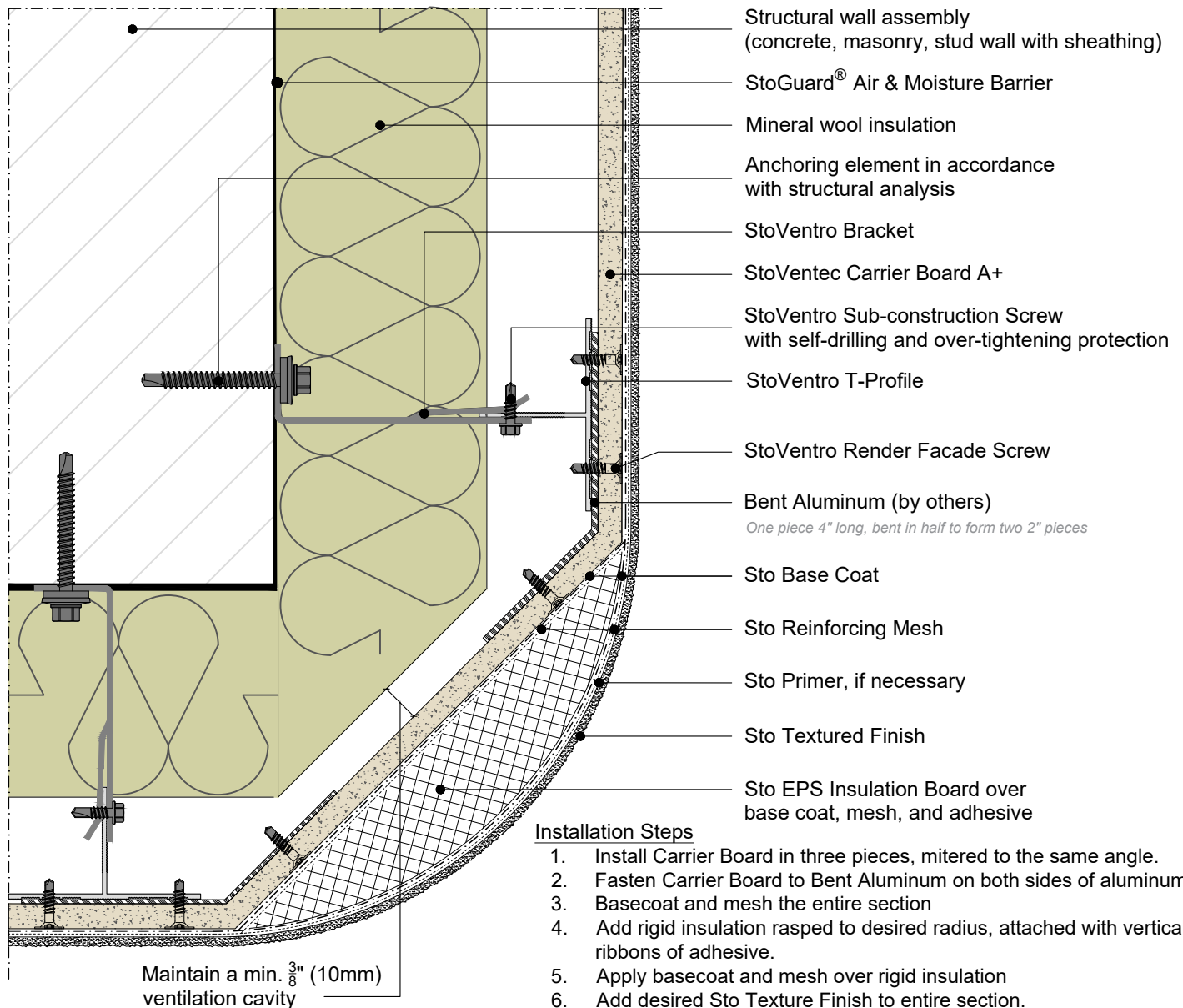
## Curved Outside Corner with Foam Insulation

Date: November 2021

Plan View

Detail No.: 90.R.417

*Not drawn to scale. For illustration purposes only*



### Installation Steps

1. Install Carrier Board in three pieces, mitered to the same angle.
2. Fasten Carrier Board to Bent Aluminum on both sides of aluminum.
3. Basecoat and mesh the entire section
4. Add rigid insulation rasped to desired radius, attached with vertical ribbons of adhesive.
5. Apply basecoat and mesh over rigid insulation
6. Add desired Sto Texture Finish to entire section.
7. Allowable thickness of Sto EPS Insulation Board limited to 4" (102mm) or as determined by analysis.

### ATTENTION

Sto products are intended for use by qualified professional contractors, not consumers, as a component of a larger construction assembly as specified by a qualified design professional, general contractor or builder. They should be installed in accordance with those specifications and Sto's instructions. Sto Corp. disclaims all, and assumes no, liability for on-site inspections, for its products applied improperly, or by unqualified persons or entities, or as part of an improperly designed or constructed building, for the nonperformance of adjacent building components or assemblies, or for other construction activities beyond Sto's control. Improper use of Sto products or use as part of an improperly designed or constructed larger assembly or building may result in serious damage to Sto products, and to the structure of the building or its components.

**STO CORP. DISCLAIMS ALL WARRANTIES EXPRESSED OR IMPLIED EXCEPT FOR EXPLICIT LIMITED WRITTEN WARRANTIES ISSUED TO AND ACCEPTED BY BUILDING OWNERS IN ACCORDANCE WITH STO'S WARRANTY PROGRAMS WHICH ARE SUBJECT TO CHANGE FROM TIME TO TIME.** For the fullest, most current information on proper application, clean-up, mixing and other specifications and warranties, cautions and disclaimers, please refer to the Sto Corp. website, [www.stocorp.com](http://www.stocorp.com).