

Detail No.: **51.03**
 Date: **October 2023**
 Page: **1 of 2**

- Notes:**
1. StoPanel® GPS ci is a lightweight energy efficient pre-fabricated exterior wall panel with graphite polystyrene (GPS) continuous insulation and a continuous air and water-resistive barrier (AWRB). The panel can be finished with a wide variety of Sto textured finishes, Sto specialty finishes, and StoCast finishes.
 2. Vertical ribbons of adhesive to provide channels for drainage.
 3. Alternative air and water resistive barriers (AWRB): Sto Gold Coat®, Sto AirSeal®, and StoGuard® VaporSeal (requires Sto TurboStick™ Adhesive)
 4. Alternative Edge and Joint Treatment: Sto RapidGuard®.
 5. Alternative base coats: Sto BTS® Plus, Sto Primer/Adhesive-B, and Sto Primer/Adhesive (requires Sto textured finish).
 6. Components not identified as Sto are furnished by other manufacturers.

Shown with:
**StoSignature
 Texture Rough 10**

ATTENTION

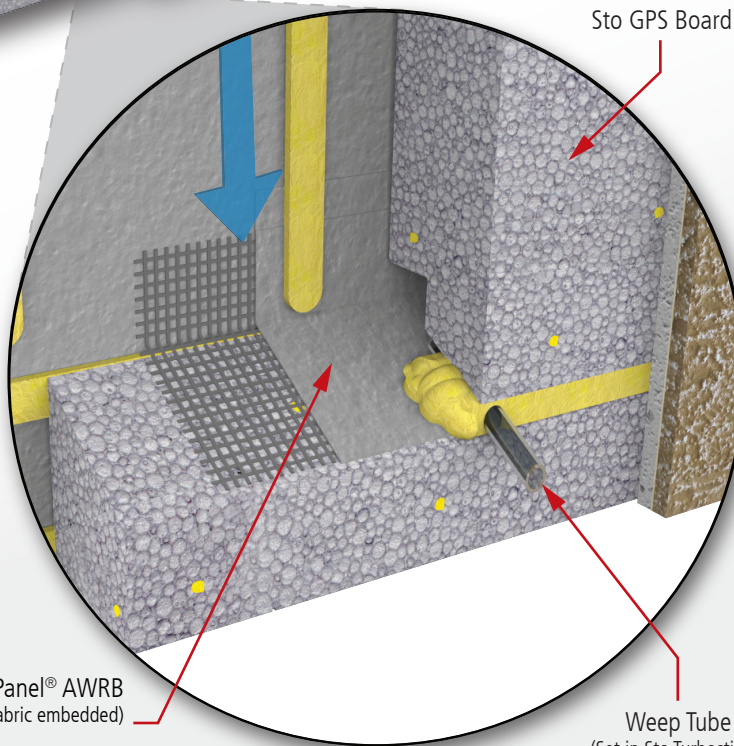
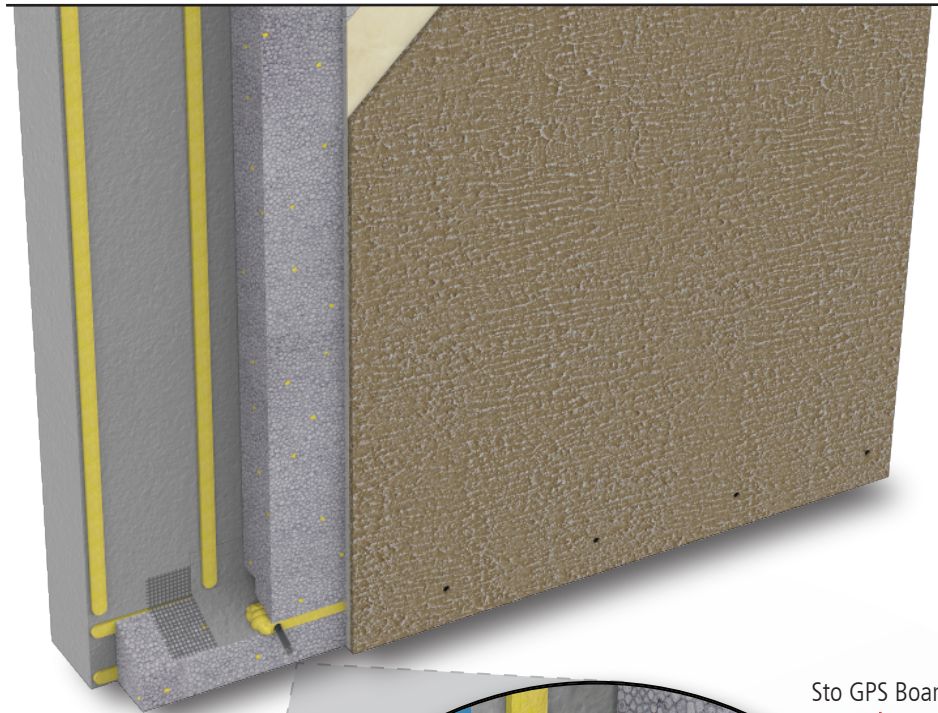
Sto products are intended for use by qualified professional contractors, not consumers, as a component of a larger construction assembly as specified by a qualified design professional, general contractor or builder. They should be installed in accordance with those specifications and Sto's instructions. Sto Corp. disclaims all, and assumes no, liability for on-site inspections, for its products applied improperly, or by unqualified persons or entities, or as part of an improperly designed or constructed building, for the nonperformance of adjacent building components or assemblies, of for other construction activities beyond Sto's control. Improper use of Sto products or use as part of an improperly designed or constructed larger assembly or building may result in serious damage to Sto products, and to the structure of the building or its components.

STO CORP. DISCLAIMS ALL WARRANTIES EXPRESSED OR IMPLIED EXCEPT FOR EXPLICIT LIMITED WRITTEN WARRANTIES ISSUED TO AND ACCEPTED BY BUILDING OWNERS IN ACCORDANCE WITH STO'S WARRANTY PROGRAMS WHICH ARE SUBJECT TO CHANGE FROM TIME TO TIME. For the fullest, most current information on proper application, clean-up, mixing and other specifications and warranties, cautions and disclaimers, please refer to the Sto Corp. website, www.stocorp.com.

Property of Sto Corp. All Rights Reserved.

www.stopanel.com





Sto Wedge
Patented integral drainage
at bottom of panel

StoPanel® AWRB
(with StoGuard® Fabric embedded)

Sto GPS Board

Weep Tube
(Set in Sto TurboStick®)

U.S. Patent No.8,919,062 B1

Detail No.: **51.03**

Date: **October 2023**

Page: **2 of 2**

Notes:

1. StoPanel® GPS ci is a lightweight energy efficient pre-fabricated exterior wall panel with graphite polystyrene (GPS) continuous insulation and a continuous air and water-resistive barrier (AWRB). The panel can be finished with a wide variety of Sto textured finishes, Sto specialty finishes, and StoCast finishes.

2. Vertical ribbons of adhesive to provide channels for drainage.

3. Alternative air and water resistive barriers (AWRB): Sto Gold Coat®, Sto AirSeal®, and StoGuard® VaporSeal (requires Sto TurboStick™ Adhesive)

4. Alternative Edge and Joint Treatment: Sto RapidGuard®.

5. Alternative base coats: Sto BTS® Plus, Sto Primer/Adhesive-B, and Sto Primer/Adhesive (requires Sto textured finish).

6. Components not identified as Sto are furnished by other manufacturers.

ATTENTION

Property of Sto Corp. All Rights Reserved.

Sto products are intended for use by qualified professional contractors, not consumers, as a component of a larger construction assembly as specified by a qualified design professional, general contractor or builder. They should be installed in accordance with those specifications and Sto's instructions. Sto Corp. disclaims all, and assumes no, liability for on-site inspections, for its products applied improperly, or by unqualified persons or entities, or as part of an improperly designed or constructed building, for the nonperformance of adjacent building components or assemblies, or for other construction activities beyond Sto's control. Improper use of Sto products or use as part of an improperly designed or constructed larger assembly or building may result in serious damage to Sto products, and to the structure of the building or its components.

STO CORP. DISCLAIMS ALL WARRANTIES EXPRESSED OR IMPLIED EXCEPT FOR EXPLICIT LIMITED WRITTEN WARRANTIES ISSUED TO AND ACCEPTED BY BUILDING OWNERS IN ACCORDANCE WITH STO'S WARRANTY PROGRAMS WHICH ARE SUBJECT TO CHANGE FROM TIME TO TIME. For the fullest, most current information on proper application, clean-up, mixing and other specifications and warranties, cautions and disclaimers, please refer to the Sto Corp. website, www.stocorp.com.

www.stopanel.com

